



# MONTHLY MEMBERSHIP PROGRESS REPORT

District 2 S4

Results as of: 3/31/2015

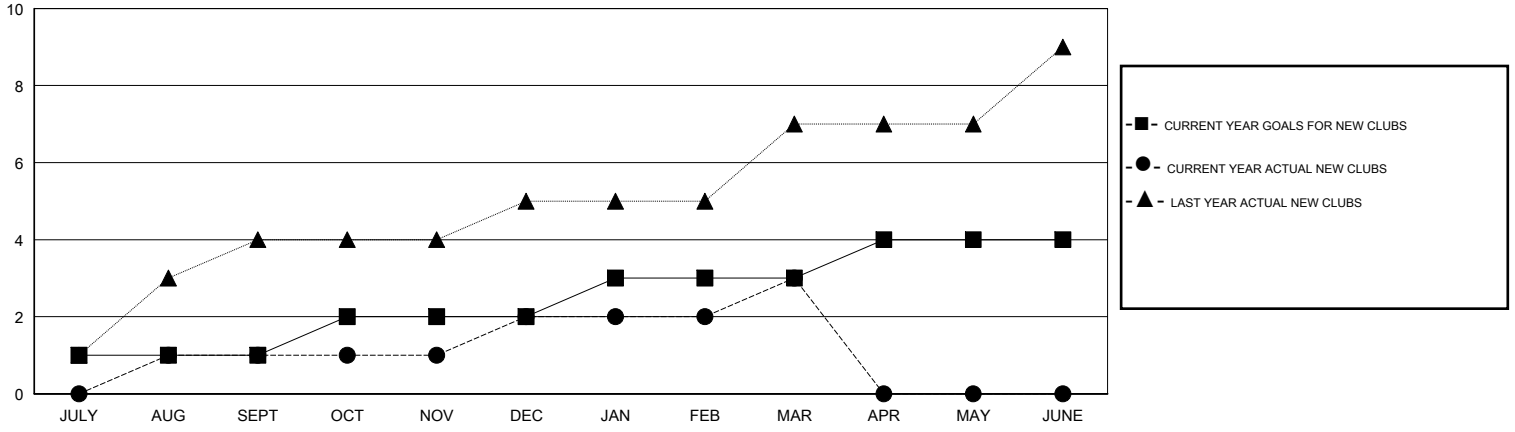
GMT: HAL GRIFFIN

LOCATION TEXAS

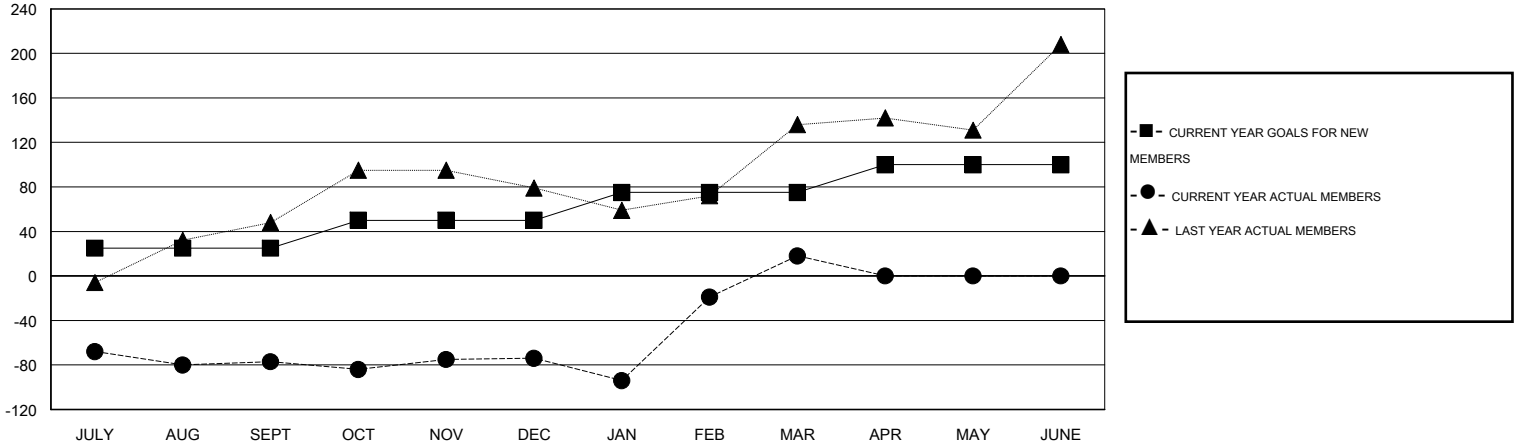
GMT CA 1

Clubs					Members				
RESULTS FOR 2014-2015					RESULTS FOR 2014-2015				
QUARTER	NEW CLUB GOAL	NEW CLUBS	DROPPED CLUBS	NET GAIN/LOSS	QUARTER	NEW MEMBER GOAL	CHARTER AND NEW MEMBERS ADDED	DROPPED MEMBERS	NET GAIN/LOSS
JULY/AUG/SEPT	1	1	1	0	JULY/AUG/SEPT	25	116	193	-77
OCT/NOV/DEC	1	1	0	1	OCT/NOV/DEC	25	112	109	3
JAN/FEB/MAR	1	1	0	1	JAN/FEB/MAR	25	179	87	92
APR/MAY/JUNE	1	0	0	0	APR/MAY/JUNE	25	0	0	0

GOALS AND ACTUAL NEW CLUBS CUMULATIVE



GOALS AND ACTUAL MEMBERS CUMULATIVE



DROPPED CLUBS: 1	59 CLUBS OF 86 ADDED 1 OR MORE NEW MEMBERS	<u>GENDER DISTRIBUTION</u>	
		MALE	1,530 (60.05%)
<u>DROPPED MEMBERS</u>	<a href="#">CLICK HERE FOR HEALTH ASSESSMENT DATA</a>	FEMALE	1,018 (39.95%)
DECEASED		18	FAMILY UNIT MEMBERS
CLUB CANCELLED	0	HEAD OF HOUSEHOLD	225
OTHER	371	NON-HEAD OF HOUSEHOLD	232
<b>TOTAL</b>	<b>389</b>		